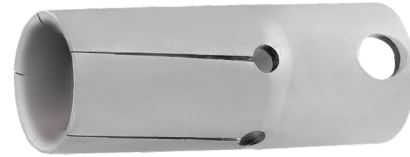
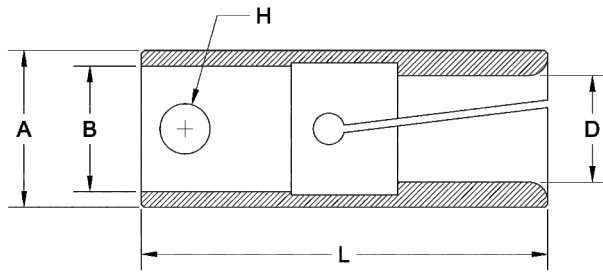


BARFEEDER COLLETS



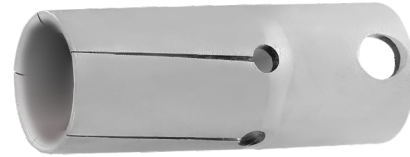
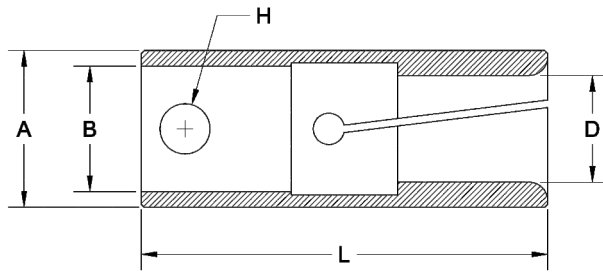
BARFEEDER COLLETS WITH PIN TYPE

All Dimension are in mm - Unless Otherwise Specified

Part Nr.	Guiding Dia	Length	Bore Dia	Hole Dia	Capacity	
					Range	
					Ø Min	Ø Max
	ØA	L	ØB	ØH		
BF05/02	5	28	3.5	1.5	1	3.5
BF07/04	7	37	5	3	1	5.5
BF10/02	10	40	7	4	1	8
BF12/05	12	40	8	4	1	10
BF15/01	15	55	10	6	3	13
BF15/06	15	40	11	6	3	13
BF15/08	15	50	11	6	3	13
BF15/10	15	55	7	2	3	13
BF16/03	16	65	11	6	3	14
BF16/05	16	40	11	6	3	14
BF17/01	17	55	7	2	13	15
BF17/02	17	45	11	6	5	15
BF19/02	19	57	10	6	3	17
BF19/04	19	57	10	2	3	17
BF19/07	19	40	11	6	13	17
BF20/05	20	56	10	6	13	18
BF20/06	20	65	14	8	3	18
BF22/02	22	65	14	8	18	20
BF25/02	25	65	20	8	3	23
BF25/03	25	76	16	8	3	23

* table to be continued

BARFEEDER COLLETS



BARFEEDER COLLETS WITH PIN TYPE

All Dimension are in mm - Unless Otherwise Specified

Part Nr.	Guiding Dia	Length	Bore Dia	Hole Dia	Capacity	
					Range	
	ØA	L	ØB	ØH	Ø Min	Ø Max
BF30/02	30	65	20	8	23	28
BF32/05	32	65	20	8	28	30
BF32/06	32	76	16	8	23	30
BF34/01	34	90	20	8	18	32
BF35/03	35	65	20	8	30	33