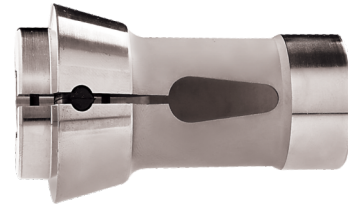
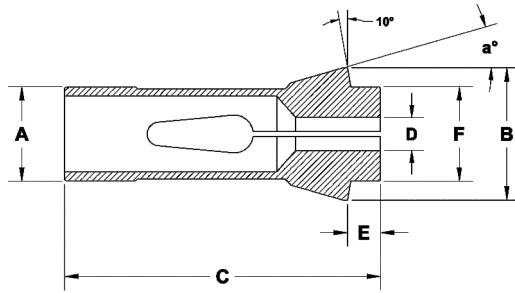


Collets - Pinces - Spannzangen - Pinze



F - TYPE WITH TAPERED SHOULDER

All Dimension are in mm - Unless Otherwise Specified

Part Nr.	Guiding Dia	Major Dia	Total Length	Nose Length	Nose Dia	Angle	Capacity		
							Round	Hexagon	Square
	ØA	ØB	C	E	ØF	a°	●	⬡	■
SF 17.46/79	17.46	22	51	5	16	15°	13.5	11	9
SF 22/71	22	30	55	6	21	15°	16.5	14	11
SF 32/221	32	45	75	8	34	15°	26	22	18
SF 35/94	35	48	80	8	38	15°	30	25	21
SF 38/72	38.08	49	107.5	9	38	15°	32	27	22
SF 42/99	42	55	94	9	42	15°	36	30	25
SF 43/37	43	53	92	10	46	16°	38	33	27
SF 43/9078	43	53	92	10	42	15°	35	30	25
SF 48/38	48	54	100	10	44	15°	39	34	28
SF 48/81	48	60	94	9	50	15°	42	36	29
SF 48/9079	48	54	100	10	44	15°	41	35	29
SF 58/9046	58	70	94	9	60	15°	51	44	36

F - TYPE WITH TAPERED SHOULDER