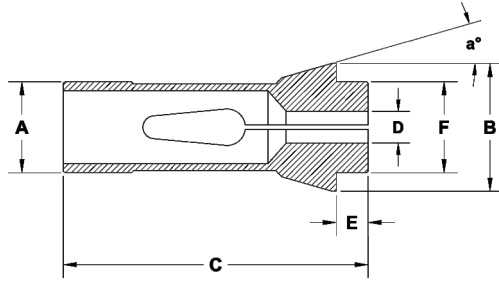


Collets - Pinces - Spannzangen - Pinze



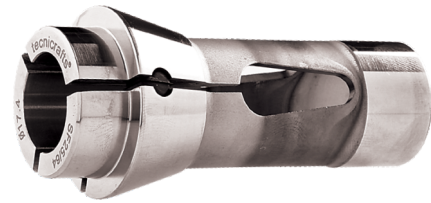
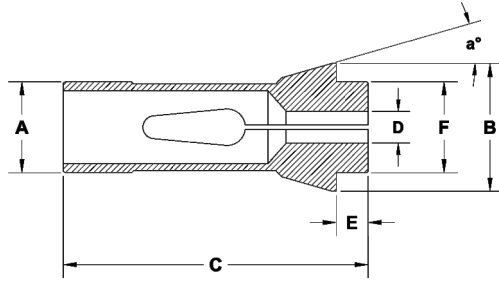
F - TYPE WITH STRAIGHT SHOULDER

All Dimension are in mm - Unless Otherwise Specified

Part Nr.	Guiding Dia	Major Dia	Total Length	Nose Length	Nose Dia	Angle	Capacity		
							Round	Hexagon	Square
	ØA	ØB	C	E	ØF	a°	●	⬡	■
SF 7/66	7	10.7	26	2.9	7	15°	4.5	3	-
SF 8/577	8	12	42	4.5	8	16°	5.5	4	3
SF 10/86	10	15.5	47.5	5.5	10	20°	7	5	4
SF 10/1178	10	16	46	4	10	20°	7	5	4
SF 12/78	12	18.1	44.5	4.3	12	15°	8	6	5
SF 12/578	12	18	64	6	12	16°	8	6	5
SF 13/357	13	19	64	6	13	16°	10	8	7
SF 14/98	14	18	46	4	14	13°	10	8	7
SF 15/358	15	22	47	5	15	20°	10.5	9	7
SF 15/580	15	21	64	6	15	16°	11	9	8
SF 16/104	16	22	55	5	16	15°	12	10	8
SF 16/1076	16	21	64	6	16	16°	12	10	8
SF 20/87	20	28	67	7	21	16°	16	13	11
SF 20/102	20	27.5	60	5	20	15°	16	13	11
SF 20/201	20	26	54	5	19	15°	16	13	11
SF 20/9026	20	26	67	3	19	16°	16	13	11
SF 22/727	22	32	66	7	25	16°	17	15	12
SF 23.8/9020	23.8	28	62	7	22	15°	18	15	12
SF25/64	25	35	77	10	27	16°	20	17	14
SF 25/91	25	34	65	6	25	15°	20	17	14

* table to be continued

Collets - Pinces - Spannzangen - Pinze



F - TYPE WITH STRAIGHT SHOULDER

All Dimension are in mm - Unless Otherwise Specified

Part Nr.	Guiding Dia	Major Dia	Total Length	Nose Length	Nose Dia	Angle	Capacity		
							Round	Hexagon	Square
	ØA	ØB	C	E	ØF	a°	●	⬡	■
SF 26/90	26	32	67	7	27.5	13°	20.5	17	14
SF 26/9021	26	36	67	7	28	15°	20.5	17	14
SF 27/22	27	38	72.7	8	30	15°	23	19	16
SF 28/93	28	38	70	7	28	15°	23	19	16
SF 28/9004	28	35	77	10	27.5	16°	22.5	19	16
SF 30/63	30	42	80	10	34	16°	25	21	17
SF 30/101	30	38	65	6	32	15°	26	22	18
SF 30/9044	30	42	80	12	32	16°	25	22	18
SF 30/9066	30	42	78	10	32	16°	25	22	18
SF 33/9043	33	40	80	12	32	16°	28	24	20
SF 37/740	37	47	92	10	40	16°	32	27	22
SF 40/9074	40	50	92	10	43	16°	35	30	24
SF 44/9082	44	52	92	10	44	16°30'	38	32	27