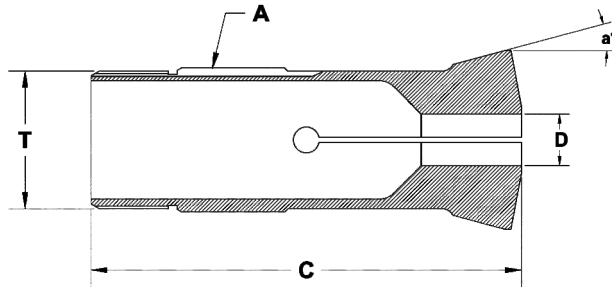


Collets - Pinces - Spannzangen - Pinze



**COLLET WITH EXTERNAL THREAD**

All Dimension are in mm - Unless Otherwise Specified

Part Nr.	Guiding Dia	Total Length	Thread	Angle	Capacity		
					Round	Hexagon	Square
	ØA	L	T	a°	●	⬡	■
SF19/9018	19.05	77	M18.3 x 1.2	15°	13.0	11	9
SF33/9017	33	100	M32 x 1.5	15°	27.0	23	19
359E	23	93.8	Tr 23 x 1.5	20°	18.0	15	12
363E	25	89	M23 x 1	16°	18.0	15	12
366E	28	106.5	Tr 27 x 20f	18°30'	21.0	17	14
367E	28	104.4	Tr 28 x 1.5	20°	22.0	19	15
386E	32	115	Tr 32 x 1.5	20°	27.0	23	19
390E	47	115	Tr 47 x 1.5	20°	38.0	32	26

COLLET WITH EXTERNAL THREAD